

JCDecaux Innovate

Below is a list of **general** guidelines for JCDecaux Innovate. For approval, all innovative concepts must be taken through the JCDecaux Innovate process.

Guidelines:

- Specials can go outside the frame of the board within reason and subject to JCDecaux approval
- Special Builds are not to exceed 30cm out from the board
- A special can not weigh more than 300kgs
- The board must be at least 10 foot above the ground
- A reci-certified electrician must always be used for electrical work
- Board must be returned to JCDecaux in the same condition as provided
- Specials are required to be taken down on time at the end of the campaign, a penalty charge will apply otherwise
- A notice period is required of 6-8 weeks for all JCDecaux innovate projects

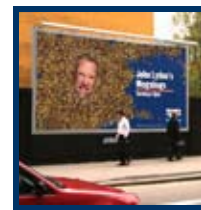
Eluminate8



Bluetooth



Lenticular



Special Lighting



Special Build



Spangley's



UV

